

A contemporary dream home rarely goes without some wow effect.

In these issues I will be covering 10 ways that really make a modern house stand out. So look out for more!

One art supplies shop's poison

Because I go to Toastmasters on Mondays I often have some free time before the session. So rather than wasting the time (and leaving lots of money!) at my favourite art supplies shop I decided to give 25 minutes every first Monday of the month to people who want to talk about their project.

If you or someone you know are thinking of renovating, have questions but do not know where to start you can meet me for a **free introductory consultation** every first Monday of the month at 6:00 pm at 565 George St, Sydney City.

To book a meeting email katrina@designprojector.com or call 0407 174 434.

Also, see back page →

Katrina Malyn
Building designer
Design Projector



7 COST FACTORS THAT AFFECT YOUR RENOVATION

How to get off to a good start money-wise with renovation or building a new house

The success of your project largely depends on whether your budget accounts for all the costs, fees, levies – you name it. With all the red tape many costs remain overlooked... until you get the bill.

This 7-page guide answers the most burning questions for everyone who wants to renovate like:

1. How to avoid cost surprises?
2. How to get what you want – without overpaying?
3. How much various people charge?
4. What is square metre rate?



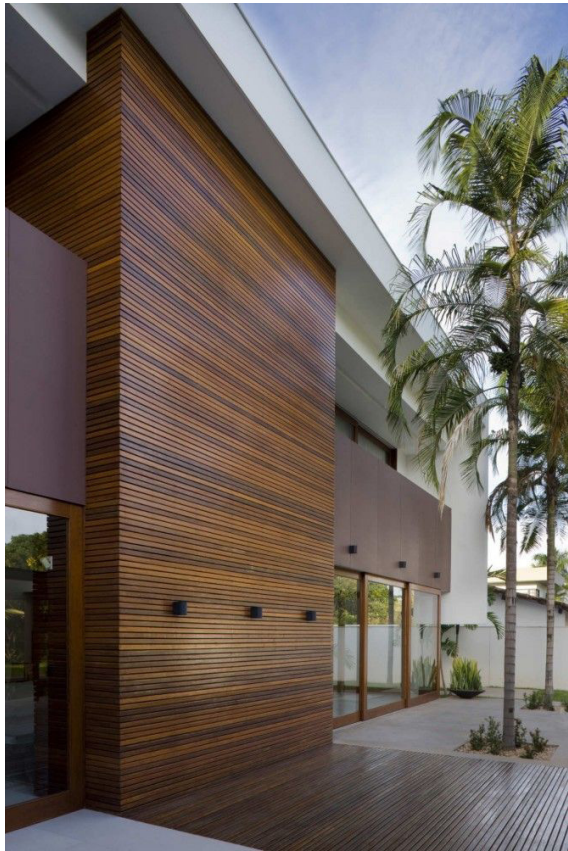
and more.
To download the guide go to: www.designprojector.com.au

10 KEYS TO DREAM HOUSE DESIGN

PART 1

How to make a modern house stand out. Natural timber





House 13 in Brazil by Atria Arquitetos
photo by Edgar César

The secret to making the most of natural timber cladding is to rely on strict geometry

**‘Poetry is as precise a thing as geometry.’
– Gustave Flaubert**

Are you a regular reader of architecture and design magazines? If yes, then you know that using natural materials is a sure-fire way to make a house look very expensive. The solid timbers and stone can exude luxury and charm that we cannot withstand. It is however very easy to get it wrong and make the house pretentious.

In one of the following parts I will focus on natural and artificial stone. In this issue we are going to look at timber, why it works and how to do it right using one of some very effective techniques.

Let’s start with one approach – combining **natural timber** with **strict geometry**.

In this duo geometry comes first and serves as the background for the timber. The reason is timber creates some rhythm because of the format in which it comes.

Think timber cladding for example. To really bring the **rhythm** to the foreground all the rest has to be toned down and very much under control so as to make a backdrop for the nice changes in shape or even texture that happen in natural timber.

So what is this strict geometry? How do we put it under control? Well, the first thing is to look at the junctions of the walls and the roof. The fewer details there, the cleaner the form.

Traditional gable roof with a barge board adds extra details that may detract your eye. In fact, all details that are there to cover, like bargeboard, fascia or, for that matter, any external embellishments, really work against the sleek effect.

This is why how roof meets the walls becomes very important and may actually bring some cost at design and construction stage. However, it pays off if you want to have this **visual orderliness**.

The second thing to watch for is the context against which you use the timber. The same rule applies here: keep all the rest restrained and simple. Look at the examples and try to find how the designers achieved this effect.

In summary, if you plan to use natural timber for exterior or interior make sure that everything around it is quite subdued in terms of its geometry.

To read the full article about creating design oomph with natural timber cladding and see more examples visit my blog at www.designprojector.com.au/blog.



Venice House by Sebastian Mariscal

Check yourself! See if you can find 8 key words from the text.

R B Y Q V R U A S L
Z E F R E R M I T A
H M D B T J E O R R
L K M R Q E U C I U
O I A C O Y M W C T
T R H Y T H M O T A
G N I D D A L C E N
L A U S I V U F P G
C Q D X J V X M D C
S Q G E F E V F D T

Question: *What if I don’t want to bother with looking after timber but still want the look?*

Answer: *There are aluminium products that look just like timber and do well in coastal environment with harsh conditions of salt spray, UV exposure and humidity.*

Cover photo: The Ettley Residence in California by Studio 9one2